

*Hubble  
Bisbee*

CHRISTIE'S  
INTERNATIONAL REAL ESTATE



LAVENDER HILL  
2724 ALDEN ROAD



### LOCATIONS

2330 W Joppa Road, Suite 104  
Lutherville, MD 21093

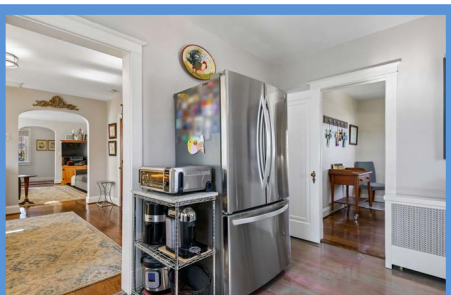
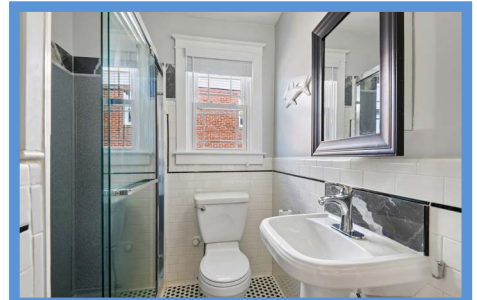
181 Harry S Truman Pkwy Ste 200  
Annapolis, MD 21401



### LYNN PLACK

REALTOR®  
lynn.c.plack@gmail.com  
410-340-2939 (Mobile)  
410-321-1411 (Office)

WWW.HUBBLEBISBEE.COM | (410) 321-1411 (OFFICE) | 





## FOYER

- Paneled entry door with 8-pane window
- Hardwood flooring
- Window with wood blind
- Closet with auto-light
- Glass globe ceiling light
- Archway to Living Room

## LIVING ROOM 16' X 14'

- Hardwood flooring
- Woodburning fireplace with Colonial mantel, stone hearth, ceramic tile surround and gas log insert
- Two windows with custom shades
- Archway to Hall
- Archway to Dining Room

## DINING ROOM 14' X 13'

- Hardwood flooring
- Double window with pleated shades
- Ceiling light
- Concealed staircase to Upper Level
- Cased portal to Kitchen

## KITCHEN 14' X 9'

- Painted wood floor
- Beadboard front wood cabinetry in white finish wall cabinets and gray finish base cabinets
- Corian counters- 2008
- Glass tile backsplashes
- LG stainless steel French door refrigerator
- Samsung stainless steel 5-burner gas range
- Whirlpool stainless steel built-in microwave
- Whirlpool stainless steel dishwasher
- Stainless steel undermount sink with gooseneck faucet and disposal
- Window with custom shade
- Paneled exit door with 6-pane window to Deck
- Glass-globe ceiling light
- Under-cabinet lighting
- Concealed staircase to Lower Level
- Access to Office

## OFFICE 11' X 9'

- Hardwood flooring
- Two windows with wood blinds
- Ceiling light
- Access to Bedroom 2

## HALL

- Archway access from Living Room
- Hardwood flooring
- Closet
- Ceiling light
- Access to Bedrooms 1 and 2, Hall Bath

## BEDROOM 1 13' X 11'

- Hardwood flooring
- Two windows with wood blinds
- Ceiling light
- Closet

## BEDROOM 2 11' X 11'

- Hardwood flooring
- Double window with custom shades and Roman shades
- Ceiling light
- Closet
- Access to Office

## HALL BATH 8' X 6'

- Black and white ceramic hex-tile floor
- Ceramic tile wainscot with black trim
- Pedestal sink with marble backsplash, framed mirror medicine cabinet and overhead lighting
- Swanstone shower stall (2020) with marble trim, rain shower, additional handheld shower, body sprays, wall niche and sliding glass doors
- American standard flush
- Window with wood shades
- Exhaust fan

## UPPER LEVEL

- Dormer addition and renovation 2015
- Second zone hydronic baseboard heating

## PRIMARY SUITE

### SITTING ROOM 12' X 9'

- Pine staircase access with wall sconce light and tread carpeting
- Hardwood flooring
- Window
- Dual access walk-in closet
- Ceiling light
- Access to Primary Bedroom

## PRIMARY BEDROOM 27' X 19'

- Private hall entry with sliding frosted glass glazed door to Primary Bath
- Hardwood flooring
- Double window with plantation blinds
- Frosted glass glazed door to custom fitted walk-in closet with window with pleated shade and built-in window seat with cushion
- Laundry closet with Maytag washer and LG dryer
- Dual access walk-in closet
- Recessed lighting
- Ceiling fan

## PRIMARY BATH 10' X 6'

- Stone finish ceramic tile floor
- Cantilevered double vanity with solid

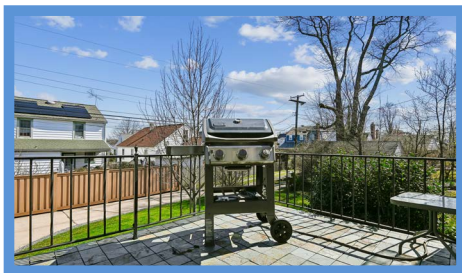
- surface top, undermount sinks, framed mirrors and overhead lighting
- Tub/shower combination with subway tile surround with mosaic glass tile accents, wall niche and hinged glass shower partition
- American Standard flush
- Stainless steel wall mounted towel shelf with towel bar and hooks
- Double window with pleated shades
- Ceiling light/exhaust fan

## LOWER LEVEL

- Unfinished
- French drain system and sump pump- 2003
- Carpeted staircase access
- Painted concrete floor
- Ceiling can lighting
- Storage room with heavy-duty built-in shelving
- Enclosed flush
- Utility sink
- Whirlpool washer and dryer
- Under-stair cherry storage closet with mounted antique mirror and cherry lined interior
- Three storage cabinets
- Built-in wall safe
- Gas-fired boiler
- State Select gas-fired water heater- 2015
- Electric service panel including service for generator
- Three windows
- Exit door to level walk-out to back yard and driveway
- Office furniture excluded
- Work bench excluded

## EXTERIOR

- Vinyl 'shake' siding- 2006
- GAF architectural asphalt shingle roof- 2019
- Champion replaced windows with lifetime guarantee- 2006
- Chimney repointed, new chimney cap, Smokelite refractory spray system, waterproofing and breathable masonry spray- 2021
- Covered flagstone front porch
- TREX privacy fence along back property line and 1 side with gate to side yard and gate to utility easement- 2007
- Concrete rear driveway from alley to garage with parking pad and drainage
- One-car garage- portable generator negotiable
- Elevated rear deck accessed from Kitchen with flexible tube gas hookup for grill or generator
- Covered porch below deck- access from lower level



*All information contained herein deemed reliable but not guaranteed by the Broker*